



The Gear

Nov. 2005

Contact Information

Section President:
Susan Thomas Schlett
h: 920-533-5135
schlett@yahoo.com

Section Vice President and Section Representative Alternate:
Betty Leonhard
h: 920-269-7510
betzluzvvetz@yahoo.com

Section Representative:
Dina Bertolini
h: 608-930-8787
dmechanics@yahoo.com

Section Representative:
Rita Murino
h: 414-380-1875
rita.murino@harley-davidson.com

Section Secretary:
Barb Grlica
w: 414-273-8800
bgrlica@brwncald.com

Section Treasurer:
Gina Janke
w: 262-636-1315
gina.janke@swe.org

Newsletter Editor:
Andrea Cole Fyhrlund
w: 262-512-8113
h: 262-268-1092
afyhrlund@ameritech.net

Membership Chair:
Barb Gosenheimer
h: 920-648-8426
barbara.gosenheimer@swe.org

Career Guidance Chair:
Julie McMullin
h: 414-571-6483
jmcmullin@brwncald.com

Professional Development Chair:
Elizabeth Mathew
w: 262-544-3776
Elizabeth.mathew@med.ge.com

Article deadline for "The Gear" is the fifteenth of the preceding month. Trial subscriptions are available to persons interested in membership. Send articles to: Andrea Cole Fyhrlund, Editor, 126 W. Chestnut St., Port Washington, WI, afyhrlund@ameritech.net.

Inside this issue:

President's Corner.....	1
Upcoming Meetings/Activities.	2
Web Seminars.....	3
Member News.....	4
Meet Our FY06 Officers.....	7
Volunteers Needed.....	8
Recent Meetings/Activities.....	10
COR News.....	12

Serving the 176 Members of the Wisconsin Section, and Its Supporters

President's Corner – Susan Thomas Schlett, Section President

Dear SWE Members and Supporters,

Thanks to Deborah Rice at SWE Archives, here is a little history for you...our Section was chartered as the Milwaukee Section in 1973 and the name was changed to Wisconsin in October 1980.

Happy 25th Anniversary SWE-WI!

It never ceases to amaze me what inspirational stories our members have. I had the pleasure of talking with two particularly amazing women this past month: Elizabeth Bastian, the first woman to graduate from Milwaukee School of Engineering (MSOE) in 1969 and one of the founding members of the Wisconsin SWE Section, and Dr. Elizabeth Meyerand, a biomedical engineering professor at the University of Wisconsin at Madison. I just had to share their stories with you, see pages 5 & 6!

The next Professional Development Web Seminar that SWE has to offer is on **November 15, 2005**. The topic will be "**Transitioning from Engineer to Manager**" and it is **FREE to EVERYONE**, (not just SWE members). Don't let the date and time keep you from registering at www.swe.org today...it's easy to register and if you aren't able to view it at the scheduled time, you may have the opportunity to see a rebroadcast of the seminar, at your convenience. For more details see page 4 and tell a friend. New members who join in November 2006 are eligible for a SWE dues discount!

In conjunction with the 2006 Engineers Week theme of "**Connecting Educators to Engineering**", SWE-WI has created a **6th Grade Design/Essay Contest**. Our SWE-WI goal was to attempt to contact every sixth grader in the state of Wisconsin and our career guidance volunteers rose to the challenge! They mailed contest brochures to over **1200** public & private 6th grade schools! Find out how you can become involved with this exciting endeavor in *Volunteer Opportunities* herein. Also, check out the contest website at www.msn.fullfeed.com/~swewi/eweek2006.htm. A huge thank you to all the corporations who donated services for this terrific project!

Well, it's almost here. The premier event of the year, **SWE's National Conference, November 3-5 in Anaheim, CA**. The largest professional development and career conference for women engineers is on track to attract more than 3,000 engineering professionals, students and corporate representatives. For those planning to attend, we would love to see your photos and hear your impressions of the conference upon your return home. If you did not originally plan to attend, but find that your travels put you in this CA area, remember you can still register for the conference on site. Have a safe trip and "**Celebrate SWE! Go Region H!**"



Upcoming Meetings/Activities

SWE-CRS / Iota Sigma Pi Joint Meeting on Electroplating

Think the SWE National Conference is all that's happening in November? Well, think again! SWE-CRS will be holding a joint meeting with the local chapter of Iota Sigma Pi, a National Women's Chemistry Honor Society, on Friday, Nov. 11, 2005. Guest speaker will be Mr. Frank Altmayer, owner of Scientific Control Laboratories and renowned expert on electroplating. His presentation will cover the basics of electroplating. The event will take place at St. Xavier University in Chicago, IL. Cost for the event is \$20 per person and includes a great Italian buffet dinner.

Reservations should be made to Maggie Workman at 773-325-7445 or mworkman@depaul.edu by Monday, Nov. 7th. Please indicate you are with SWE when placing your reservation. Guests and non-members are welcome! Remember: an RSVP represents a financial commitment.

The possibility of Professional Development Hours is available for Professional Engineers attending this event.

For more information on this event, please contact Deanna Heffron at dheffron@sclweb.com.

What: Joint meeting with Iota Sigma Pi, featuring Frank Altmayer speaking on "Electroplating"

When: Friday, Nov. 11, 2005

Networking begins at 6PM, dinner at 7PM, presentation at 8PM

Where: St. Xavier University Board Room (WAC E402)
3700 W. 103rd St., Chicago

Cost: \$20 per person, includes buffet dinner

RSVP: 773-325-7445 or mworkman@depaul.edu by 11/7/2005

Tentative menu for Italian buffet dinner:

Antipasto Salad and Caesar Salad with Herb Croutons

Meat Lasagna and Vegetable Lasagna

Fettuccini, Penne with marinara or alfredo

Italian Green Beans

Garlic Bread Sticks

Cannoli and Biscotti

Coffee, Iced Tea, and Water

Web Seminars

Transitioning from Engineer to Manager

Presented by Rachel Hutter from Walt Disney World Co.

Sponsored by a SWE Program Development Grant

November 15, 2005

2:00 pm – 3:00 pm Central Standard Time

Free for Members & Non-members!



Whether you've been in a technical position for two or twenty years there may come a day when you suddenly find yourself on the management track. Will you be ready? Disney's Rachel Hutter is here to help. Ms. Hutter will discuss the major differences between the two roles, the necessary skills to transition to manager, how to establish credibility and ways to measure your success. Rachel Hutter is Director, Attractions Engineering Services and Quality Assurance for Walt Disney World Company.

Register today!

SWE Members Spread the Word - Special Member Discount in November!!

In conjunction with our membership web seminar, "Transitioning from Engineer to Manager", we will be offering a 50% discount off of professional membership dues to any new members joining SWE in the month of November. The web seminar is free to members and non-members so they can try out our program on November 15th with the web seminar and if they like what they see they can join!

This is a great opportunity to show other engineers the value SWE brings to your professional and personal lives. Send them to www.swe.org/transitionwebreg to register for the free web seminar and a special email will be sent to them after November 1st to join at the special discounted rate!

This seminar is generously sponsored by a SWE Program Development Grant.

Coming this Spring: Sensible, Sustainable Designs

A presentation on how to incorporate environmentally sustainable designs is planned for March 2006 at the Urban Ecology Center in Milwaukee.

Watch for more details in the next newsletter!

Member News

Welcome to the following new SWE-WI members since September 1, 2005:

- Anne Anderson
- Laura E. Beauchamp (Student Upgrade from Notre Dame)
- Meghan E. Collins (Student Upgrade from University of Rhode Island)
- Monica M. Cutillo (Student Upgrade from Cornell)
- Michelle Gehrke
- Jennifer Li
- Brittany Jo Merten (Student Upgrade from Purdue University)
- Heather Anne Miller (Student Upgrade from Tulane)
- Kari Nichols
- Tammy Rabe
- Amy Squitieri
- Sarah J. S. Stepanski
- Rebecca M. Willett (Student Upgrade from Rice University)
- Yiyang Xiong
- Sarah E. Zimet (Student Upgrade from University of Rochester)
- Megan A. DeMaster
- Andrea Lemkelde



Congratulations to **Dina Bertolini** on her October 1st wedding. We wish her all the best!

A big “**Thank you!**” from Julie McMullin, to everyone who helped with the 6th Grade Essay/Design contest effort, including:

- Abby Peele
- Laura Matter
- Lia Holland
- Barb Grlica
- Nat McMullin



The following is an excerpt from an interview that Susan Schlett had with SWE-WI Charter Member Elizabeth Bastian on 10/6/05:

Susan: "Elizabeth, what was your best memory of being the first woman to graduate from the Milwaukee School of Engineering (MSOE)?"

Elizabeth: "My best memory was probably the standing ovation that my two young sons and I received from everyone at the graduation ceremony."

Susan: "You spent 10 years attending school at night and working full time while raising two boys by yourself. Do you have any regrets?"

Elizabeth: "No, I saw no other way to earn a living; to earn more money and support my boys."

Susan: "I hear that your boys used to help you with your homework. How so?"

Elizabeth: "Anthony and Timothy would read my text books to me while I would make dinner."

Susan: "What do you remember about being one of the founding (charter) members of the Wisconsin SWE Section?"

Elizabeth: "I had read in the newspaper about a gal from Milwaukee who was an architect...I forget her name, but she had won an award and I called her up to congratulate her. This gal had read the article that one of my boys had put in the newspaper for me when I graduated* [see below] and we began to correspond. At one point she mentioned to me that we might have enough interested women in the area to start a SWE Section**, and I replied, **Let's go for it!**"

* Thanks to the Milwaukee Public Library and Copyright Services for the reprint of the article "Dear Mom..." from The Milwaukee Journal, May 16, 1969.

**Note that the SWE Wisconsin Section was originally called the Milwaukee Section and it was chartered in 1973. The name was later changed to the Wisconsin Section in 1980.

Dear Mom . . .

Here's Your Graduation Present, Mrs. Bastian

By JO SANDEN
of The Journal Staff

Love letters, as a rule, are not published in newspapers, but in the case of Mrs. Elizabeth Bastian, 2036 S. 88th st., West Allis, there are reasons to make an exception.

For one thing, according to the Milwaukee School of Engineering, Mrs. Bastian is the first woman to be graduated from its night school with an associate degree in industrial management. She will be recognized at graduation ceremonies at 8 p.m. Friday in the Electric Co. auditorium.

For another, she has two sons — Anthony, 15, and Timothy, 14 — who think she is an extraordinary woman. They, too, plan a special presentation, a bottle of champagne purchased with carefully saved pocket money.

But that's not quite enough, the boys decided, so each planned an extra surprise. Anthony called The Journal. He did not know Tim's surprise but he knew what he wanted to do.

"She doesn't get much time for herself," he said, "but she sits down for about 20 minutes every day to read the newspaper and I thought it would be a great surprise for her if she saw her name there. I wanted that to be my graduation present."

So Anthony gave The Journal what he thought was a short news item. It came out more like a love letter, this one:

"I'm really proud of my mother. She has raised—my brother and me since he was 1 and I was 2 (when she was separated from her husband).

"And for about the last 10 years (actually since 1962), she's been working full time days (as a draftsman at Louis Allis Co.) and going to school nights so she could get a better job and take care of us better.

"It was kind of hard for her at school at first, I mean they didn't have any women students and so (a giggle) they didn't have any women's bathrooms.

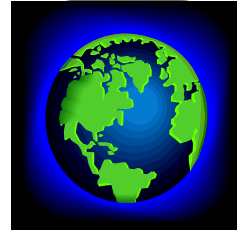
"And with working and studying and cooking all the time on weekends so we could have something to warm up when she couldn't make it home for supper, she only gets about four or five hours sleep at night.

"That's been sort of tough on her, but I'm really glad and really proud that she was willing to fight it out.

"That's all, I guess."

That's all, Mrs. Bastian. Except to sign this . . .

Love,
Anthony.



SWE Is Growing, But It's Still a Small World!

– by Susan Thomas Schlett

During my monthly review of our SWE-WI membership roster there was one name out of the 165 listed at the time that kept catching my eye. This gal's name looked so familiar to me...had I met her back in the 1980's at a Certificate of Merit reception? (The COM is a SWE honor bestowed upon juniors in high school who excel in math and science and are active in their school and/or community.) I looked back through my SWE files from my days as a member of the Hartford SWE Section. In my COM file, I found a newspaper clipping of a student with the same name as on my roster. In addition to the COM this student was a National Science Fair winner. Could this girl who grew up in a Connecticut town next to the one I grew up in, be the same person on my Wisconsin SWE Section membership roster?

I couldn't wait any longer; I had to find out! I phoned Dr. Elizabeth Meyerand and discovered she was indeed the student, Beth Meyerand, whom I had met in Connecticut about 20 years ago! She is now married with a one-year old daughter and is a professor of biomedical engineering and neuroscience at the University of Wisconsin at Madison. She had moved to Wisconsin about six years ago just as I had done! We had a great conversation that included talk of the 2006 Engineers Week and its theme of *Connecting Educators to Engineering*. She said that receiving the Certificate of Merit from SWE while she was in high school definitely influenced her decision to join SWE. In conclusion I thanked her for her time and she mentioned that she would be interested in being a science fair judge, and if I ever saw an opportunity to let her know. I will definitely let her know!

Meet Our FY06 Officers



Gina Janke - Treasurer

Gina Janke has been involved with SWE since 1986, starting as a student at Harvey Mudd College, California. She was a member of the Los Angeles Section for 7 years. She acted as the Job Bank Coordinator for 3 years in the Sacramento Valley Section. Since joining the Wisconsin Section in 1997, she has participated as Public Relations Chair, Vice-President, and Secretary for this section. Since July, 2000, she has served as the Section Treasurer. Gina continues to be an integral member of the SWE-WI Executive Council.

Julie McMullin, P.E. – Career Guidance Committee Chair

Julie McMullin, P.E. has been nominated by the SWE-WI Section for the *New Faces of Engineering* Recognition Program! She has been a very active member of the Section, most recently our Career Guidance Chair.

Keeping our rivers and lakes clean is becoming increasingly critical as water supplies diminish. Julie McMullin has dedicated her career to protecting these water resources, through her work planning and designing facilities for improving water quality and preventing water pollution. As a consultant, Ms. McMullin's work includes planning, designing, and creating management strategies for sewer overflow prevention, wastewater treatment, stormwater management, and wetland and watercourse restoration. She has worked on a variety of projects, ranging from a small ravine restoration project to a 20-foot diameter, 300-foot deep, 2-mile long portion of the "Deep Tunnel" relief sewer in Milwaukee, Wisconsin. Ms. McMullin is particularly interested in sustainable development, working to implement solutions that coexist with the environment. She has worked on water improvement projects throughout the country, including projects in Wisconsin, Ohio, Illinois, Minnesota, Iowa, South Carolina, and Texas.



In addition to working as a consultant, Ms. McMullin also was a contributing author for the manual *Reducing Peak Rainfall-Derived Infiltration/Inflow Rates – Case Studies and Protocol (99WWF-8)*, which was published by the Water Environmental Research Foundation in 2004; co-wrote an article for the *Journal of Environmental Science and Technology*; and was a co-author for a presentation for the 2004 Water Environmental Foundation and Research Technologies (WEFTEC) Collection Systems specialty conference.

Volunteers Needed!

Advertising and Fund Development Coordinator

A person is needed to help manage invoices and payment receipt for advertising, donations, and other Section fund development. Spreadsheets, invoice templates and other documents have been created to support this position. This person will be the liaison to the individual and Corporate Sponsors.

Estimated time per month: 3 hours. Resources required: Email address and phone number for contacting sponsors. All template documents in Microsoft Word and Excel. Training is provided. Please contact Gina.Janke@swe.org if interested.

A Wisconsin SWE Volunteer Opportunity!

E-Week: February 2006 “Connecting Educators with Engineering”

The SWE-Wisconsin E-Week committee is currently holding a design contest for 6th graders in Wisconsin. Details on the design contest can be found at <http://www.msn.fullfeed.com/~swewi/eweek2006.htm>. We are currently looking for volunteers to help the E-Week committee sort the completed applications, send out response letters to applicants, and/or evaluate the completed contest applications to help choose the three winning applicants. If you are interested in helping out, please contact Julie McMullin at jmcmullin@brwncald.com.

Interested in being involved? Here’s your chance! Consider these great opportunities:

- **Volunteer on your own time schedule!**

Would you be willing to call a new member to welcome them to our quickly growing organization? We are looking for volunteers! One thing we like to do for new members is give them a welcome call and ensure that we have the correct contact information for them. If you would be interested in participating in this activity, please contact SWE-WI Membership Chair Barb Gosenheimer at Barbara.gosenheimer@swe.org, and she will get you started.

- Other national and regional volunteer opportunities are posted regularly to the mailing list RegionH-Business. See <http://www.msn.fullfeed.com/~swewi/moreswe.htm> for more on mailing lists.

- **The Collegiate Leadership Coach Committee (CLCC)**, former Student Section Vitality Task Force, is looking for more coaches to support the student sections. They would like to have one Collegiate Leadership Coach (CLC) for every 5 schools in the Region. Currently, region H has 43 student sections and we have only 3 CLCs. We definitely can use more coaches. If interested, please contact Cathi Yee (Catherine.yee@swe.org) directly for an application form. Thank you for your support in advance!

Volunteers Needed!

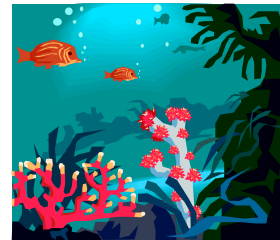
Engineer Advisor Needed for FIRST Lego League

Alexander Mitchell School, located at 1728 South 23rd Street in Milwaukee, is looking for an engineer advisor for the FIRST Lego League. The challenge this year is called "Ocean Odyssey."

More information is at <http://www.firstlegoleague.org/default.aspx?pid=11050>

The team would benefit from an engineer with expertise in robotics, mechanical and electrical engineering.

If you are interested, please contact:
Kevin McDonald (Teacher at Alexander Mitchell School)
414-902-8154 Work



Section Website: <http://www.msn.fullfeed.com/~swewi>

Check out the website for lots of useful SWE information! Do you have other ideas? Let us know! We'd love to add even more material to the site! Send e-mail to swe-wi@swe.org.

Advertising Information

Newsletter ads, per issue: 1/2 page ad = \$25. Full page ad = \$50. For more information, contact Gina Janke (gina.janke@swe.org, or 262-636-1315).

Webpage ads, per 1 month period: \$15 for text & simple graphic link. Graphic should be in one of the following software formats: JPEG, GIF, BMP, TIFF, TGA, RAS, EPS, PCX, PNG, and PCD
For more information, contact Vanessa White (vanessa.white@swe.org).



Recent Meetings/Activities

Kickoff Meeting at Buca's

The September 29th kickoff meeting at Buca's in Milwaukee was a resounding success! We had a great mix of professional members from GEHealthcare, Astronautics, Brown & Caldwell, Harley-Davidson, Mercury Marine, MSOE, Mortensen, Omega Research Corp., and Rockwell Automation, and student members from Marquette, UW-Milwaukee, MSOE, that included the 3 student section presidents. We shared great food and ideas about what SWE has to offer.

Thanks everyone for a SUPER evening!!



The International Conference of Women Engineers and Scientists (ICWES13) – by Wilma Carol Marcy LaBelle

I, along with 590 engineers and scientists from 49 countries met at Ewha Woman's University, Seoul, Korea, in August of 2005. The theme of the Conference was, **“Women Engineers and Scientists: Main Force to Reshape the Future World.”**

The topics for discussion were in categories:

1. Science and Technology
Information Technology, Nanotechnology, Biotechnology, Energy, Environment, Space Technology;
2. Education and Ethics
Female-Friendly Science and Engineering Education, Introducing Girls to Science and Technology, Encouraging women students to pursue STEM Major and Career-STEM{science, technology, engineering, and mathematics}, Sisters in Science and Engineering Creating Warming Climate, Creative Thinking and the Role of Women in the 21st Century;
3. Gender and Leadership
Scientific Sessions, Workshop.

I submitted a paper entitled, *Homes-Yesterday, Today and Tomorrow*, to ICWES13. It was accepted for publication and I was invited to speak. I wrote and prepared picture slides about new building materials, how electricity is produced, and how this relates to the environment.

As you can observe from the long list of topics, there was a huge smorgasbord of speeches for selection. The numerous speeches were happening simultaneously for three days. I chose to hear these speeches: The Origin of Cosmic Rays, The Protection of Genetic Resources in The Aspect of Intellectual Property Rights, International Patent Law, Astronomy, Inside the Earth and What We Know About It, Variations in Chemical Content and Epiphytic Load of some Macroalgae From Two Localities in the Kenyan North Coast, Global Issues on Radioactive Waste and Climate Change, Radioactive Waste Management, Fuel Cell Technology-Chances and Challenges, as well as parts of other speeches.

Meeting and talking to the participants was a marvelous experience. Many speakers were experts and had recent news about their subject. There were tours available. I visited Samsung Electronics and toured to Andong, Korea; seeing the beautiful rice fields and visiting a folk museum. There was also music, dancing, and parties. Korean students in gold t-shirts were helping answer questions. At the formal dinner at the Shilla Seoul Hotel, Korean drummers performed; they had performed on Broadway. All in all ICWES13 was a magnificent meeting of persons from many parts of the world.

Pictures and data are on the Internet at: <www.icwes13.org>.

ICWES14 is planned for Lille, France, 2008.

Council Of Representatives News



The **SWE National Conference** is just around the corner. Please keep the following important meetings in mind while planning your trip to Anaheim, CA

Wednesday, 11/2

8 pm - 10 pm Ice Cream Social

Thursday, 11/3

10 am - 1 pm COR Mega Issues

1 pm - 5 pm Region H Meetings (Student: 1-2 pm; Joint: 2-3:30 pm, Professional: 3:30 - 5 pm)

8 pm - 10 pm Networking Night Hospitality Suites

Friday, 11/4

10 am - 11 am 4 concurrent COR FIG (Focus Interest Groups) meetings are scheduled for: Meeting, Mega Issues, Environmental Scanning and Procedures

6 pm - 10 pm Achievement Awards Reception and Awards Banquet

Saturday, 11/5

10 am - 11 am Membership Meeting

1 pm - 5 pm COR Meeting

6:30 pm - 10 pm Celebrate SWE!

All CORs and their alternates should attend the COR Mega issues meeting and the COR meeting on Saturday. If you participate in one of the COR FIGs that will have a meeting on Friday, you need to attend that specific meeting as well.

Please forward this information to all your conference attendees. All professional members should attend the Region H Joint meeting and the Professional meeting.

Please don't forget to bring your cow bells and signs to the conference!!! We need them at the Celebrate SWE! event.



MBA SUPPLY CHAIN MANAGEMENT

Real Focus, Real Success

- Students are exposed to valuable learning outside of the classroom. Enrichment activities and events underscore current supply chain practices and expose students to forward thinking about how new technologies such as RFID will impact the supply chain.
- The Grainger Center won the 2004 International Graduate Logistics Case Competition. Grainger Center teams have the distinction of being the only teams to have won this elite competition twice. We are also the only program to have teams finish in the top three in every competition since first participating in 1999.
- 100 percent of May 2004 graduates had an offer for a full-time position at graduation.
- 100 percent of continuing students were placed into meaningful summer internships.



SCHOOL OF BUSINESS
University of Wisconsin-Madison
Grainger Center for Supply Chain Management

608/262-1941 • Email: graingerctr@bus.wisc.edu • www.bus.wisc.edu/grainger

PLACEMENT

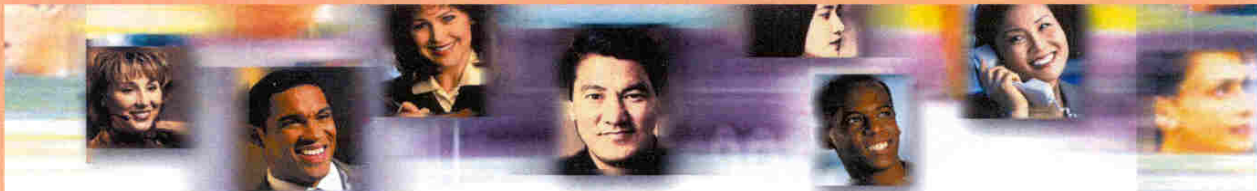
Internship Offers

Best Buy
Briggs & Stratton (2 offers)
Cisco Systems
E.&J. Gallo Winery
W.W. Grainger, Inc.
Harley-Davidson Motor Company
IBM Corp.
Kohler Company
Oshkosh Truck
Ryerson Tull
Schreiber Foods, Inc. (1 of 2 offers accepted)
Average Accepted Monthly Base Salary: \$5,145

Full-time Employment Offers

Abbott Laboratories
Cargemini U.S.
Eaton Corp.
ExxonMobil Chemical
GE Medical Systems
General Mills
Guidant Corp.
Hewlett-Packard (2 of 2 offers accepted)
IBM (1 of 2 offers accepted)
Intel
Kendall Jackson Estates
Lands' End
Nike (2 offers)
Siemens Medical Solutions
Snap-On Inc.
Philip Morris
Average Accepted Base Salary: \$81,413

Bold type indicates an accepted offer



Honor, integrity, valor, and exceptional opportunity define this badge.

In today's world, the role of the FBI is more critical than ever. Our mission is a noble one. It encompasses protecting the country from terrorism, contributing to homeland security, and investigating violations of federal criminal law. In essence, it entails securing the integrity and safety of America, her communities, and her way of life. Accept the challenge — and experience the rewards of becoming one of 'America's Finest.'

Special Agents come from a broad range of educational disciplines and professions, however, the FBI has special needs for candidates with critical skills among the following areas: **Computer Science or IT, Engineering, Foreign Counterintelligence, Information Systems Security, Military Intelligence, Physical Sciences, Accounting/Financial Management, and Foreign**

Language (Arabic, Chinese - all dialects, Farsi/Persian, Hebrew, Hindi, Japanese, Korean, Pashtu, Punjabi, Russian, Spanish, Urdu, and Vietnamese).

To qualify for the FBI Special Agent position, you must possess a four-year college degree plus three years of professional work experience, be available for assignment anywhere in the FBI's jurisdiction, be between the ages of 23 and 36, and be in excellent physical condition with the ability to pass a rigorous physical fitness test.

To learn more about these and other opportunities, please visit our Web site for complete details. Positions added daily.

www.fbijobs.com

You must be a U.S. citizen and consent to a complete background investigation, drug test, and polygraph as a prerequisite for employment. Only those candidates determined to be best qualified will be contacted to proceed in the selection process. **TDD: (202) 324-2967.**

The FBI is an equal opportunity employer.



FBI

Special People. Special Agents.

Upcoming Events!

Nov. 3-5, 2005.....	SWE National Conference, Anaheim, CA
Nov. 11, 2005.....	SWE-CRS Joint Meeting with Iota Sigma Pi, Chicago, IL
Nov. 15, 2005.....	Web Seminar – Transitioning from Engineer to Manager
Dec. 15, 2005.....	E-Week 6th Grade Essays Due
Feb. 7, 2006.....	6th Grade Essay Contest Winner Notification
Feb. 19-25, 2006.....	Engineers Week
Mar. 3-5, 2006.....	SWE Region H Conference, Iowa State, Ames, IA
Mar. 2006.....	SWE-WI Sensible, Sustainable Designs Meeting, Milwaukee, WI



**Society of
Women Engineers**

ASPIRE • ADVANCE • ACHIEVE

About The Society of Women Engineers...

Our Principles:

The Society of women Engineers is a non-profit organization dedicated to informing young women, their parents, counselors, and general public, of the qualifications and achievements of women engineers, and the opportunities open to them.

Mission:

- Stimulate women to achieve full potential in careers as engineers and leaders.
- Expand the image of the engineering profession as a positive force in improving the quality of life.
- Demonstrate the value of diversity.

Address changes to:

Wisconsin Section, Society of Women Engineers
N2626 Meadowbrook Lane
Campbellsport, WI 53010

Support for production of this newsletter provided to the Wisconsin Section by:

Rockwell Automation (www.ra.rockwell.com)

Mercury Marine (www.mercurymarine.com)

Westbrook Engineering (www.westbrookeng.com)

GE Healthcare (www.gehealthcare.com/worldwide.html)